

NEWSLETTER SUMMER 2025



Whimble Primary School

Issue 3

09.05.25

It has been another short but busy week. Our eight Year 6 children successfully completed The Exmoor Challenge last Saturday, walking 16 miles across moorland in that heat was impressive, so well done to Alice, Amelie, Eleanor, Felix, Freddy, Isla, Maisie and Oliver.



Start and End of School Day

Timekeeping, both before and after school is becoming more of an issue - this is not only disruptive to their learning but the learning of others. It is also taking up a lot of adult time too. Your support with this would really be appreciated by everyone at school.

Personal Items

We are seeing an increasing amount of items being brought in by children from home. This is causing some disruption as children lose or break things. Teachers have spoken with specific children and their parents if they require an item for a particular need. Please support us by checking what your children are bringing in, sadly many items brought in are not suitable for use at school and could be being brought in without your knowledge. Checking bags regularly would really help with this.

Lost Property

We have a huge amount of unnamed clothing items being stored in various places at school. These are taking up valuable space so will be placed outside after school today. Please look through and take any items you wish to have.

Plant Request

Our school garden is coming along nicely, between Glen, our volunteer, and Miss Sharratt with her gardening club are creating a fantastic space for all to enjoy. If you have any spare plants, particularly flowers, please drop them off and we will find somewhere to plant them.



Federation News from Mr Jolliffe

The feedback you gave us from last year's parent questionnaire helped us to complete the federation development plan and to shape our priorities for this year. In response to your comments we have worked hard to improve wrap around care for more schools and increasing the breadth of and access to after school clubs. We have also worked hard to manage the needs of a small number of children with additional needs and sought additional funding or alternative placements for them; this is still very challenging and often beyond our control. However, we have developed and sustained federation-wide sporting and culture events, including sporting competitions and festivals musical performances, concerts and shows and this has been recognised through positive Ofsted reports on personal development.

Now we are asking for your help again to let us know how you feel your child is getting on at school by completing this year's Parent Questionnaire and we really appreciate the time and thought that goes into your responses. This year, we have included questions about school meals and our response to the global climate emergency situation. The link for the survey can be found below:

<https://www.exevalleyfederation.co.uk/Parent-Questionnaire/>

If you cannot access the on-line survey, school offices can give you a paper copy of the survey.

It would really help us if you could complete the survey by Friday, 23rd May, so that we can analyse your views ahead of our planning for next year's Federation Development Plan. Thank you very much for your help.

EXMOOR CHALLENGE

Congratulations to all the teams from all seven schools who took part in the Exmoor Challenge last weekend. It was certainly a personal development challenge, with teams walking 16 miles over Exmoor on one of the hottest days of the year so far. Well done to all the teams for completing the course and thank you to the parents and staff who made this possible.

CIRCUS PAZAZ

The Friends of Silverton School
present

CIRCUS PAZAZ

TO CELEBRATE OUR 50TH ANNIVERSARY

22 June 2025 | Silverton Primary School
Coach Road, EX5 4JY

Choose from three 50 minute
showtimes: 12pm, 2pm or 4pm

Buy your tickets now! £7pp or
£25 for a family of four

FUN!

Stalls, BBQ, Bar and Raffle available



SUMMER FAIR



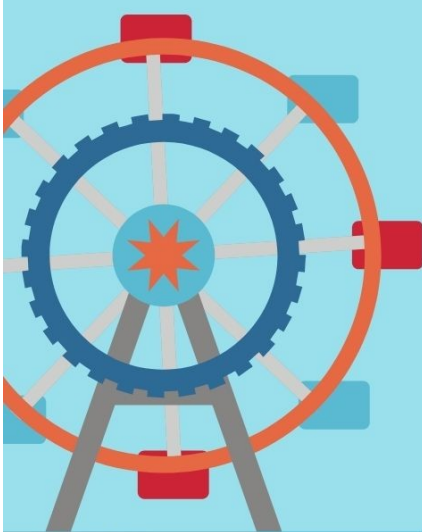
Saturday 21st June
1pm to 4pm

WHIMPLE PRIMARY SCHOOL

FREE ENTRY

JOIN US FOR LOTS OF FUN!

- BBQ • Tea and Cake • Bar •
- Lego Play •
- Pirate Hoopla •
- Face Painting •
- Wheel of Fortune •
- Nerf Gun Shooting •
- Tin Can Alley •
- Tombola •
- Splat the Rat •
- Robot Maze •
- Pre-loved uniform •
and much more!



All Welcome!





Cranbrook Junior Park Run

As many of you will know, this time last year, around 50 children from Whimple School took part in the Cranbrook Junior Parkrun to get active at the weekend, and to try and raise a little money to support the fantastic opportunities happening in school. We are pleased to say that we would like to take part in this again, and would be delighted if you and your child would join us!

The run happens every week due to the fantastic volunteers who give their time to make it happen, but we would like to see as many of you there as possible on **Sunday the 29th of June**. Like last year, we are asking children taking part to try and raise a little money if possible to ensure that all children in our school have access to various trips and residential experiences across the summer term. We really don't want this to be a barrier to not taking part however, so even without any fundraising we would be delighted if you came.

[Please click here to register your interest - it's free to take part.](#) We will then be in touch after half term with a sponsorship form.

PS you may also remember that last year runners were given a t-shirt if they took part. Unfortunately we will not be able to offer that this time around so time to dig out something comfy to run in!



Monday
5th May
Bank
Holiday

Monday
12th May
Read with
Oakley*
*Booking Required

Monday Fun for children
at Ottery Library
3.45 – 4.45pm

Monday
19th May
Code Club*
*Booking Required

Monday
26th May
Bank
Holiday

Libraries Unlimited is a registered charity 1170092.
To donate, please visit librariesunlimited.org.uk,
or torbaylibraries.org.uk

Supported by  **TORBAY COUNCIL**

Dates for your diary

May

Monday 12th	KS2 SATs start (until Thursday)
Friday 16th	Willow Forest School
Friday 16th	Wildlife Visitor for Beech and Oak Classes
Thursday 22nd	Bags2School Collection
Thursday 22nd	Willow Class visit to Exeter
Friday 23rd	Ash Forest School

June

Tuesday 10th	Recycling workshops Elm and Ash Class
Wednesday 18th to Friday 20th	Year 5/6 Residential
Saturday 21st	School Summer Fair
Wednesday 25th	EVF East Hub Transition Day
Thursday 26th	Ash School Trip
Friday 27th	Staff development day—no pupils

July

Thursday 3rd	Clyst Vale Transition Day
Thursday 3rd	Elm Class School Trip
Thursday 3rd	Transition Choir performance
Friday 4th	Clyst Vale Transition Day
Friday 11th	Rock Steady Concert for parents (9.30am)
Friday 11th	Sports Day (afternoon)

Statutory Assessment Dates

May	Monday 12th to Thursday 15th	Year 6 SATs
June	w/c 2nd June	Multiplication Tables Check - Year 4
	w/c 9th June	Phonics Screening Check

Term dates for pupils - 2024/25:

SUMMER TERM 2025

22nd April to 25th July 2025

Half term - May 26th to 30th May 2025

Non-pupil days (i.e. staff only): 27th June 2025

Headteacher: Mrs. Carole Shilston

Telephone/fax: 01404 822584

Email: admin@whimbleprimary.co.uk

Website: www.whimble-primary.devon.sch.uk