

NEWSLETTER AUTUMN 2022

Whimble Primary School

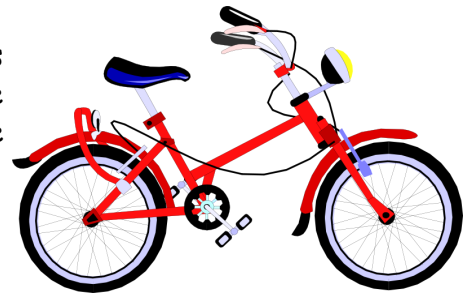
Issue 7

14.10.22

Another week has flown by, it's hard to believe there is only a week to go until half-term!

Bikeability

Our Year 6 children are participating in Bikeability next week. As there will be a lot of bikes on site and we have limited space, we ask that other children keep their bikes and scooters at home next week. Many thanks for your cooperation.



Apple Picking

Weather permitting, all children will be involved in our annual apple pick over at The Orchard site next Wednesday. We ask that children bring a pair of named wellington boots, and a pair of gloves to wear to protect their hands. If children can bring a bucket or plastic bag (could be the one the wellies are brought to school in) to help carry apples to the sacks it would be helpful.

Update on the Managed Partnership with Exe Valley Federation

Engagement has continued with Exe Valley Federation, with a view to Whimble joining the Federation in the future. The Management Partnership began at the start of this term, with senior leaders and teachers from Whimble working with EVF staff.

Whimple Primary PTA

Easy Fundraising

The PTA needs donations so it can provide funding for the things that add something extra to the school experience for the pupils, like the new covered shelters in both playgrounds, the Easter eggs for the orchard Easter hunt, school trip funding and more. Everything is getting more expensive so the PTA is focusing on building up funding in a low-impact way.



You can get funding for the PTA without spending anything extra by using Easy Fundraising when shopping online. Easy Fundraising have partnered up with hundreds of companies (Tesco, Sainsbury's, Amazon, M&S and more), who donate small amounts to the PTA with each purchase made by you.

So, if you do a weekly online food shop or stock up on party bag fillers from Amazon, accessing those websites through Easy Fundraising gets donations for the PTA at no additional cost to you.

Here's a video showing how simple it is to do. The app is unbelievably easy to use and it also shows you how much you've raised for the PTA.

<https://youtu.be/okVKGbaIzFk>

The more people that use the app, the more funding the PTA will be able to give the school, so your help with this is really appreciated.

Link is: www.easyfundraising.org.uk

Scarecrow Festival

Unfortunately there won't be a PTA scarecrow festival this year, but if you were already planning on putting a scarecrow out over half term please carry on! Hopefully there will still be a few to spot around the village.

Forest School and Gardening Club

Each class gets to go to forest school on a Friday at the MUGA for two weeks in a row on rotation. This is really well run and we need some parent volunteers to join the staff to help supervise.

Gardening club is currently run on a Wednesday and Friday afternoon for key stage 1, and we need parent volunteers to keep this going. The children really enjoy this and it often ties in well with their classroom learning.

If you fancy becoming a volunteer please ask for a form from the school office. All volunteers will need to be DBS checked.

Upcoming events:

Handmade Market
Bags2School

Sunday 6th November, 10am-4pm at the Village Hall

Tuesday 6th December 2022

Wednesday 29th March 2023

Thursday 29th June 2023 (all before 9am)

Christmas Cards TBC
Christmas Fair TBC

Dates for your diary

October

| | |
|----------------------------|-------------------------------------------|
| Wednesday 19th | Apple Picking (tbc and weather dependant) |
| Friday 21st | Forest School Oak Class |
| Monday 24th to Friday 29th | Half Term |
| Monday 31st | Staff training day (no pupils) |

November

| | |
|--------------|-------------------------------|
| Tuesday 22nd | Individual School Photographs |
|--------------|-------------------------------|

Term dates for pupils - 2022/23:

AUTUMN TERM 2022

5th September to 16th December 2022

Half term - 24th to 28th October 2022

SPRING TERM 2023

4th January to 31st March 2023

Half term - 13th to 17th February 2023

SUMMER TERM 2024

17th April to 21st July 2023

May Day holiday - 1st May 2023

Half term - 29th May to 2nd June 2023

Non-pupil days (i.e. staff only): 1st and 2nd September, 31st October 2022, 3rd January, 30th June 2023

Headteacher: Mrs. Carole Shilston

Telephone/fax: 01404 822584

Email: admin@whimble-primary.devon.sch.uk

Website: www.whimble-primary.devon.sch.uk