

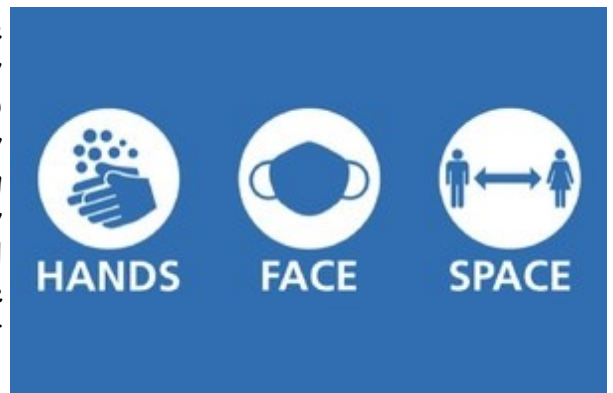
CONTACT

The Newsletter for Whimble Primary School

Issue 4-20

02.10.20

It has been a week of weather extremes which can make the end of the day more challenging. If you are only collecting a child at 3.30pm (Key Stage 2) please help others by not coming into the playground area too early as that is stopping parents of younger children in being able to collect their child. I appreciate it is a very tricky balance but it is crucial we try to maintain social distancing as there are known cases of Covid-19 in the area now and we want to do everything we can to prevent any class closures due to self-isolating.

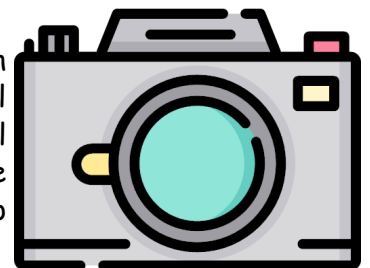


SIMS Parent

You should have received an email from the office to check and update all your details. This also includes a range of consents, including photographs. Please read the instructions on the email carefully as many of the questions asked of us have their answer in the original email. If you can do this as soon as you can it helps to ensure we have all the correct contact information in case of an emergency.

School Photographs

All children will have individual photographs taken on Monday 12th October so they will be ready for potential Christmas presents. We will also be offering sibling photographs but only for those children in school - unfortunately due to the current restrictions we are unable to include other children not in school this time. Please complete the form to sign up for the sibling photographs by midday on Friday 9th October.



https://docs.google.com/forms/d/1eD4ufkhVi-4xwLCqTwGxhkEcB7IM2B_2kp7Dxl9nGdg/edit

Form About Technology Needs (Key Stage 2)

Thank you to those parents who have already completed the form regarding technology and internet needs. This was emailed out with the class curriculum newsletter to all parents of Key Stage 2 children. The information helps us to plan accordingly in case of a future lockdown, whether it is just one class or the whole school.

If you have not completed it and do not have access to any device it is really important that you complete the survey as we may be able to help you in the future.



https://docs.google.com/forms/d/1LaUQv1-wX2SaCF7_pv_ud6eTN49PloxYQRKrjTCOWtg/edit



School Governors

The governors would like to say a big thank you to Kate Needs for her work over the last year as she steps down from being a parent governor.

We welcome two new parent governors, Sarah Butler and Carianne Bright and look forward to working with them.

Christmas Card Designs

This weekend is the perfect time to do this as going outside will be challenging.

Your child will have been given a template for the design. There is **one week only** to complete them and return them to school by Friday 9 October. It may help if your child hands over their design to an adult on duty at school in the morning to ensure it makes it to the office in good condition.



Shortly after the artwork has been sent off, you will receive a sample Christmas card and a form allowing you to order Christmas cards, gift tags, Christmas mugs, tea towels and bags for life. This is a great, fun way to raise some money for our lovely school and be ultra-organised for Christmas... one thing ticked off the to do list! And for those of you worried about the environmental impact of everything associated with Christmas, the cards are printed on FSC & Carbon Neutral accredited paper.

Dates for your diary

October

Monday 12th October School photographs

Week commencing 12th October - Bikeability (Year 6 only)

Friday 23rd October Non-pupil day (staff only)

Week commencing Monday 26th October Half term holiday

Term dates for pupils - 2020/21:

AUTUMN TERM 2020

7th September to 18th December 2020

Half term - 26th to 30th October 2020

SPRING TERM 2021

5th January to 1st April 2021

Half term - 15th to 19th February 2021

SUMMER TERM 2021

19th April to 23rd July 2021

May Day holiday - 3rd May 2021

Half term - 31st May to 4th June 2021

Non-pupil days (i.e. staff only):

23rd October 2020, 4th January, 7th June 2021



Headteacher: Mrs. Carole Shilston

Telephone/fax: 01404 822584

Email: admin@whimple-primary.devon.sch.uk

Website: www.whimple-primary.devon.sch.uk